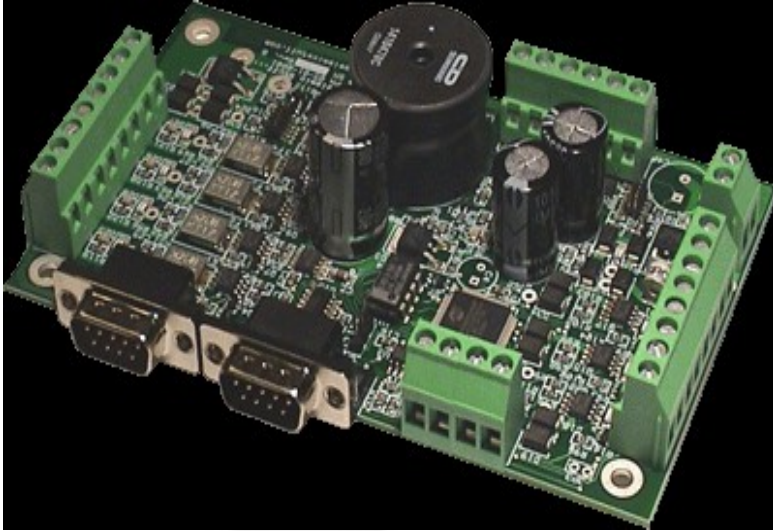


Smart Tailbuoy Power and Control System



Tailbuoys in Marine Seismic have grown into an essential and critical piece of survey equipment . They have become the home of complex positioning and telemetry systems, a navigation light, and other more other exotic accessories.

The board supplies 5 charging input connections:

Streamer Power Input
Input for Generator
Input for Solar Power

- 2 Additional Inputs for Auxiliary Power

In addition to this, all power input sources are switch-able

The board is capable of charging a 12V lead acid battery at up to 6A total current. (configurable.)

The board also has an input for a remote power off switch which will turn off all outputs if activated.

Ordering Information:

- 05-01-0001 Smart Tailbuoy Power and Control Board.